

EKA Frost-FL Soft-Foam Boxes

Installation Instructions for Cold Insulation

- 1** Fit the cap to the valve and make any necessary adjustments to the box.



- 2** Apply rubber adhesive (contact adhesive) to the joining surfaces of both insulation shells, including all surfaces of the openings for the spindle, piping, etc. If an opening is larger than required, the gap must be sealed with expanding sealing tape.



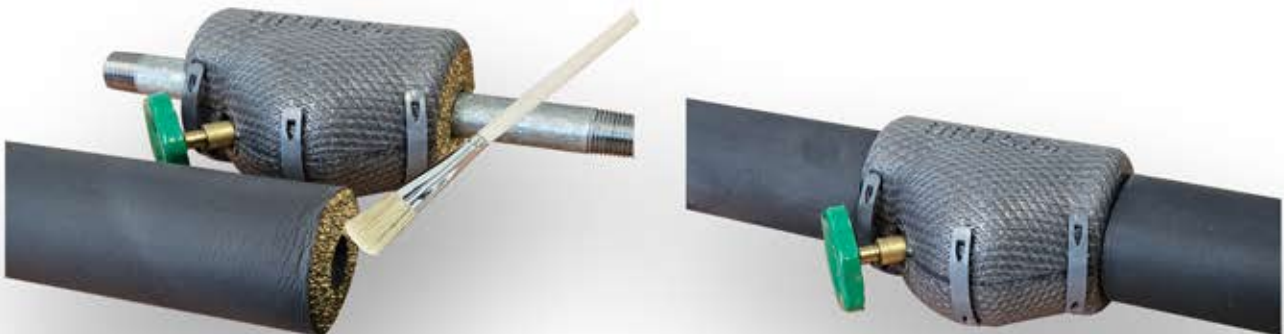
- 3** Attach the box, press the adhesive joints firmly together, and secure them with the provided clips.



Allow the adhesive to air-dry briefly until a dry skin has formed on the surface.

For a spindle neck where the handwheel rotates inside the insulation box, sealing with a perfectly fitted expanding tape is preferable to using rubber adhesive, as the adhesive would tear when the handwheel is later operated.

- 4** The rubber pipe (insulation) must be glued to both ends of the EKA Frost-FL insulation box. To do this, apply adhesive to both the end faces of the box and the rubber pipe, let it dry briefly, and then press them together (as described in points 2 and 3).



SEBALD ISO-SYSTEME GmbH & CO KG
Bahnhofstrasse 40-42
93161 Sinzing / Germany
Tel.: +49 941-30727 0
info@isosysteme.de
www.isosysteme.de

