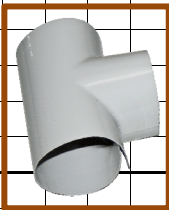


WG04

Standard Tees, grey

	Total Diameter (incl. insulation)																				€/Piece									
	52	57	61	67	73	82	88	93	100	102	108	116	120	128	130	136	140	149	156	169		176	182	189	194	214	245	268	300	
52																														4,06
57																														4,20
61																														4,42
67																														4,45
73																														4,51
82																														5,09
88																														5,39
93																														6,19
100																														6,66
102																														6,84
108																														7,25
116																														7,78
120																														8,00
128																														10,85
130																														11,11
136																														11,54
140																														11,86
149																														12,75
156																														13,11
160																														19,92
169																														23,73
176																														25,88
182																														26,12
189																														26,33
194																														26,52
214																														26,62
245																														28,69
268																														41,21



Only the colored dimensions available

90° tees with multi-fit junction

EKAPLAST is produced on order

Total Ø Main Pipe	Total Ø Junction Pipe	Combination / Graduated Junctions (examples)	€/Piece
61	61-57	21-20 / 17-20	4,62
67	67-57	27-20 / 21-20 / 17-20	4,65
73	73-57	33-20 / 27-20 / 21-20 / 17-20	4,72
82	82-57	42-20 / 27-20 / 21-20 / 17-20	5,30
88	67-57	27-20 / 21-20 / 17-20	5,66
93	93-57	33-30/42-25/33-20/27-20/21-20/17-20	6,46
102	102-57	42-30 / 33-30 / 27-20 / 21-20 / 17-20	7,16
120	93-67	42-25 / 33-20 / 27-20	8,40
120	120-98	60-30 / 57-25 / 48-25	8,40
160	160-93	60-50 / 48-40 / 42-30 / 33-30	20,83



Prices without VAT
Dimensions in mm